

**GLOBAL ONLINE AUCTION
DECEMBER 12-14, 2011
MONDAY • 8:00 AM PDT**

**SALE #2 : BY ORDER OF U.S. BANKRUPTCY COURT, CASE #11-12799-MFW
A GLOBAL WEBCAST AUCTION ON BEHALF OF SOLYNDRA:
A World Renown Solar Panel Manufacturer Featuring Thousands of
World Class Surplus and Non-core to Production Assets & Inventory**

**GLOBAL ONLINE AUCTION
DECEMBER 12-14, 2011
MONDAY • 8:00 AM PDT**

**SOLYNDRA
901 Page Avenue
Fremont, CA 94538**



SOLYNDRA™
The new shape of solar™



SOLYNDRA™
The new shape of solar™

UPCOMING SALES CALENDAR

GLOBAL ONLINE AUCTION ON BEHALF OF WESTERN DIGITAL



STARTING: December 14, 2011 (10:00 am PST)
ENDING: December 15, 2011 (10:00 am PST)

I.T, Networking, and Telecom Equipment Surplus to the Ongoing Operations of this Fortune 500 Company.

GLOBAL WEBCAST AUCTION ON BEHALF OF ROCKETPLANE KISTLER



STARTING: December 16, 2011 (10:00 am CST)
ENDING: December 16, 2011 (2:00 pm CST)

Bulk Sale Offering of Capital Equipment, Patents, Rights, and Technology of Rocketplane Kistler, Inc. an advanced developer of a fully reusable space transportation vehicle.

SUBJECT TO U.S. BANKRUPTCY COURT APPROVAL, CASE #10-29963-SVK

GLOBAL ONLINE AUCTION ON BEHALF OF CALISOLAR



STARTING: December 19, 2011 (10:00 am PST)
ENDING: December 20, 2011 (2:00 pm PST)

Major Global Online Auction of Surplus Assets of a Major Solar Panel Manufacturing Company.

GLOBAL WEBCAST AUCTION ON BEHALF OF CYLENE PHARMACEUTICALS



STARTING: December 15, 2011 (7:00 am PST)
ENDING: December 16, 2011 (10:00 am PST)

State of the Art Bio Pharma Equipment, from an Innovative Drug Discovery and Development Company.

©2011 HERITAGE GLOBAL PARTNERS, ALL RIGHTS RESERVED

Complete Terms & Conditions are contained in the Sale Catalog and on the website at www.hgpauction.com. Please review the Terms and Conditions prior to placing bids on any items. Global Headquarters: San Diego, California

AFFILIATIONS



INDUSTRIAL AUCTIONEERS ASSOCIATION



Commercial Finance Association



NAA Auctioneer



TMA

WOULD YOU LIKE TO SELL AN ASSET?



Simply call **1-858-847-0656** and speak with *George Wandachowicz* Vice President Sales for more information. We will be glad to listen to your specific needs and from that HGP can prepare a detailed solution for your review that will maximize the returns for you're assets for the company and it's Shareholders.

COMPLETE FACILITY CLOSURE

SALE #2: BY ORDER OF U.S. BANKRUPTCY COURT, CASE #11-12799-MFW

**A GLOBAL WEBCAST AUCTION ON BEHALF OF SOLYNDRA:
A World Renown Solar Panel Manufacturer Featuring Thousands of
World Class Surplus and Non-core to Production Assets & Inventory**



Heritage Global Partners

Asset Advisory and Auction Services
A Legacy since 1937

www.hgpauction.com

www.hgpauction.com



GLOBAL ONLINE AUCTION



Heritage Global Partners
Asset Advisory and Auction Services
A Legacy since 1937



DECEMBER 12-14, 2011
MONDAY • 8:00 AM PST

Public Inspection and Preview:

Date/Time:

December 12, 2011 (9:00AM to 4:00PM)

Location:

901 Page Aveune, Fremont, CA 94538

Auctioneer's Note:

SALE #2: By order of U.S. Bankruptcy Court Approval Case #11-12799-MFW Featuring All Surplus and Non-core to Production Assets & Inventory of Solyndra: A World Renown Solar Panel Manufacturer. This sale features Finished Goods Solar Panels, Personal Computers, Flat Panel Monitors, Parts Inventory, Manufacturing Equipment and Much More.

Sale Confirmation (Approval) will be required from the Bankruptcy Court, which we anticipate within 3 to 4 days after the auction. No removals will be allowed until the sale has been approved and winning bidders will be required to make a 25% Deposit immediately after the sale.

UPWARDS OF 7 MEGAWATTS OF 100 & 150 SERIES SOLYNDRA SOLAR PANELS. 100 & 150 SERIES PANELS OF VARIOUS WATTAGES, UP TO 165 WATTS

MILLIONS OF DOLLARS WORTH AT ACQUISITION COST OF ALLEN BRADLEY, PFEIFER VACUUM, VAAT, EDWARDS, SCHUNK, SIEMENS, SHIMADZU, MKS INSTRUMENTS, INFICON, AND OTHER BRAND NAME OEM SPARES, PARTS, AND COMPONENTS

OVER 1,000 LATE MODEL DELL, IBM, FUJITSU, AND OTHER BRAND NAME PERSONAL COMPUTERS, LAPTOPS, MONITORS, AND DOCKING STATIONS

Contact Information:

All Interested Parties Should Contact:

David Barkoff

Email: dbarkoff@hgpauction.com

Office: +1 650.649.0147

Cell: +1 650.759.2242

Additional Information:

For more information including a photo gallery, equipment list, terms and conditions of sale and more, please visit:

www.hgpauction.com

Buyer's Premium: 15% cash buyers; 18% for credit card purchasers (Refer to Term 7 in the Auction Terms and Conditions for details).

SALE WILL BE CONDUCTED IN ENGLISH AND WILL ACCEPT US CURRENCY ONLY



SALE#2: Featuring All Surplus and Non-Core to Production Assets & Inventory of Solyndra: A World Renown Solar Panel Manufacturer



Hundreds of Steelcase, Herman Miller, and Other Brand Name High End Executive Office Furnishings, Work Stations, Desks and Chairs.

OFFICE FURNISHINGS

Allsteel Inc. (Qty. 38 Work Stations): 49" High, Tan and Olive Partitions, White Steel frames and Fixtures and Light Wood Desk top
Allsteel Inc. (Qty. 43 Work Stations): 49" High, Tan and Olive Partitions, White Steel frames and Fixtures and Light Wood Desk top
Conference Room Lot includes (1) 14.5'x5' Wood Conference Table; (1) Wall Mounted White Board; (2) Dark Red Mahogany Wood Finish Cabinets
Mayline Lobby Furniture Lot includes: (1) Red Mahogany Wood Finish Reception Desk; (3) Black Leather Wood Finish Chairs
Mayline Executive Furniture Lot: Includes (2) Dark Red Mahogany Wood Finish Round Tables; (1) Dark Red Mahogany Wood Finish Cabinet; (1) White Board. (contents of 2 rooms)
Mayline Conference Room Lot: Includes (1) Dark Red Mahogany Wood Finish 8'x4' Conference Table; (1) Dark Red Mahogany Wood Finish Cabinet; (1) Wall Mounted White Board
Teknion (Qty. 73 Work Stations): Tan and Dark Tan Partitions, White Steel frames and Fixtures and Light Wood Desk top
Via Inc. Lot to include (16) Black Office Chairs (Large Qty. Available!!)

BREAK ROOM FURNISHINGS

Duke: 6 Section food warmer
Herman Miller Lot: To include (14) Assorted Tables and (70+) Yellow and Blue Herman Miller Stackable Chairs
Lot: Breakroom/Cafeteria Tables & Chairs to Include 75+ plastic stacking chairs and 20 42" x 42" square tables
Lot: To include (6) Tables and (14) Assorted Stackable Chairs

Lot: To include (4) Tables and (23) Chairs, Contents of (3) Break Rooms
Supremetal 5 Basin waterless food warmer w/ sectional infinite switch control, stainless steel

MACHINE TOOLS

Acra AM2 VCNC: Vertical Mill with digital control panel
Acra F1-1340 GSM: Light Duty Engine Lathe
Acra KB-36: 18" Variable Band Saw
Dayton 6Y942E: 18" Variable Band Saw
Jet SBR-30N: Shear, brake, & roll press. 20 ga. X 30" capacity
Milwaukee 6400: Safety Speed Cut, 3 1/4 hp Panel Saw
Powermatic 66-TA: Table Saw
Wellsaw 58B: Horizontal Band Saw

MICROWAVES

GE Profile (Qty. 12): Kitchen Microwave

TOOL ROOM EQUIPMENT

Bosch RZ 1: Roto Zip Spiral Saw
Chicago 44141: Electric Long Shaft Die Grinder
Craftsman Tool Chest Lot: includes Rolling Tool Chest complete with 200+ Assorted Tools, Hardware, etc
Dewalt DC920 XRP: Cordless Drill / Driver with charger and 18v XRP battery
Dremel Lot: includes (2) Dremels consisting of: (1) Dremel 395 with accessories; (1) Dremel 300 with accessories
Hitachi DS 14DVF3: Cordless Drill / Driver with charger, (2) 14.4v batteries and Hitachi UB 18D Flash Light

Jet JFHC-200X (Qty. 2): 2 Ton Folding Hydraulic Shop Crane
Jet DC-1100A: Dust Collector
Kobalt Lot: includes (1) Rolling 11 Drawer Tool Chest; (2) Traveling Rolling Hard Case Tool Box, All Complete with Assorted Tools, Hardware and Measurement Equipment
Machine Shop Hardware Lot: Includes 1,000+ Assorted Hardware, Collets, Drill Bits, coils, etc. (Shop Table Included)
Makita BHP451: Cordless LXT Drill / Driver with charger and (2) 18v batteries
Miller Millermatic 210: Mig Wire Welder
Milwaukee 0200-20: 3/8" Heavy Duty Drill / Driver with attachment
Ryobi HP412 Lot: includes (2) Ryobi HP412 cordless Drill / Driver wit (2) chargers and (4) 12v batteries
Thomas & Betts BattPac LT: Battery Operated Hydraulic Crimping tool with battery
Tite-Spot: Welders Digi S.W.A.T Welder. (Hard Rubber Tiers)
Wesco DM-1100: Ergonomic Drum Handler
PLANT SUPPORT EQUIPMENT
Allied Crane: 2 Ton Overhead bridge crane, R&M electric cable hoist
Allied Crane (Qty. 6): 5 Ton Overhead bridge crane, R&M electric cable hoist
Conco (Qty. 2): Panel loaders/unloaders, material handling crane, 240 lb. capacity
Cousins Packaging 4100 Titan Ultra: Automatic shrink wrap machine, 120V, includes variable carriage speed controller & variable force/tension carriage loader. Mfg 2008
Kaddies Inc. Tool Kaddie Porta-nizer: chemical spill kit
Fend-All Porta Stream II: Eyewash station
Packworld PW2210-440-4-44-10-K: Sealer/Packaging Machine

CAMERAS

Ilis StrainMatic F413: Strain Disc Validation Standard with 011 Camera Alignment Standard

TELEVISIONS

NEC Multisync S461: 46 inch LCD Monitor
Samsung LN52A550P35 (QTY. 3): 52 inch LCD TV

LAMINATORS

Fellowes / Dymo Jupiter 125 / 93085: (2) Fellowes' Laminating Machines . (2) Dymo Label Writers
Fellowes Jupiter 125 Lot: To include (5) Laminators

SHREDDERS

Fellowes C-220/ C220C Lot: to include (5) PowerShred Paper Shredders

PALLET JACKS

Big-Joe Altra Lift: 5,500Lbs Cap. Hydraulic Pallet Jack
Bishamon LV-10W (Qty. 8): 1,100Lbs Cap. Skid Lift
Bishamon LV100W (Qty. 2): 2,200Lbs Cap. Skid Lift
Dayton: 5,500Lbs Cap. Pallet Jack
Hercules: 6,000Lbs Cap. Hydraulic Pallet Jack
Lift-Rite Titan: 5,500Lbs Cap. Pallet Jack
Lift-Rite RG30M270048: 3,000Lbs Cap. Pallet Jack
Presto PPS2200 Electric walk behind forklift, 24V, 2200 lb capacity. Mfg 2009
Raymond 102T-F45L: 4500Lbs Cap. Electric Pallet Jack
Raymond: 5,500Lbs Cap. Pallet Jack

Complete Sales Catalog Available Online @ www.hgpauction.com

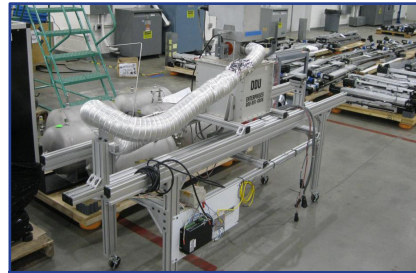
SALE#2: Featuring All Surplus and Non-Core to Production Assets & Inventory of Solyndra: A World Renown Solar Panel Manufacturer



PNEUMATIC PRODUCTS CAB 2000 Air Dryer



GOULD/ FIL-TREK/ ADVANCED UV LOT



Fusion UV Systems I300MB UV Lamp System



Light Cell Test Stations Lot: 8 Light Cylinder



Hee Environmental Storage Tank



CAB 2000 Air Dryer Chamber



Solar Test Light Fixtures



Laser Tamp Kit/ Applicator



Mezzanine Lot: AGV Track, and Retrieval System



Muratec Lot: ASRS207, Storage Retrieval System



INGERSOLL RAND HH400W Air Compressor (Qty. 2)



M.J. Mallis WCRT-200 Shrink Wrap Machine

SALE#2: Featuring All Surplus and Non-Core to Production Assets & Inventory of Solyndra: A World Renown Solar Panel Manufacturer



Piezosystem Jena Fiberswitch MM 1 x 16 x 18 Switch Fiberswitch, 5V DV, 250mA

FLUID APPLICATION/DISPENSING

Graco Monark Air Powered Pump/Fluid Applicator PVA MX-4000 (Qty. 3): Fluid dispensing system includes Graco President Air powered pump/ fluid applicator, Allen-Bradley VersaView 1500P controller. Mfg. 5/2008

FUME HOODS / EXTRACTION

Fisher Hamilton Safeaire: Flow hood, 6' x 2'
Edsyn FX 500: Fume Extraction System, 3.9A, 230V, 1 PH, 50 Hz
Edsyn SYS 600 (Qty. 6): Fume Extraction System, 110-120V, 60 Hz, 2.4A

GAUGES

Chantillon 200 LBF: Ametek Digital Force Gauge with carrying case
Dillon: Force Gauge with Carrying Case
Eurotherm: Diagnostic Unit with Carrying Case
Imada MX-110: Force Measurement, Capacity 110 lbs



LABORATORY WORK / INSPECTION STATIONS

Air Science USA DW 24: Downflow Workstation, 115V, 4A, 60 Hz. 24" x 20" surface
Air Science USA DWS 48: Downflow Workstation, 115V, 6A, 60 Hz. 48" x 20" surface

Lot: Includes (2) Lab work stations and (2) Lab benches
Lot: Includes (1) Svs lab bench with power outlets; (1) Production basic lab work station with power outlets
Lot: Includes (1) Terra Universal Lab work bench; (4) Fold out tables; (1) BenchPro lab work bench
Newport VHC3660W-OPT: Optical Isolation table, 36" x 60"
Precision: Granite Surface Plate

Solyndra Lot: (4) Solyndra custom solar tube test & inspection stations to include Allen-Bradley controllers, assorted power supplies, servo motors, and electronics. As is
SVS Lot: Includes (2) lab work station; (2) Lab work benches
Thor Labs: Optical Isolation table, 30" x 48"

LAPPING/POLISHING EQUIPMENT

SBT (South Bay Tech) (Qty. 2): Lapping/Polishing Machines

LEAK DETECTION

Alcatel ASM180 td: Helium Leak Detector
Inficon Modul 1000: Helium leak detector with display and extra sensor
Inficon UL 1000: FAB Helium Leak Detector
Leybold UL 500 (Qty. 4): Dry Helium Leak Detector
Miyachi Unitek LW300A: Laser System
Pfeiffer HLT 570: Helium Leak Detector

Over 6,000 Auction Items Available

AMPLIFIERS

Anaheim Scientific of MK Precision HG500: RGB Color Amplifier with Carrying Case
ThorLabs PDA 200C: Photodiode Amplifier

ANALYZERS

Ando AQ-6315B: Optical Spectrum Analyzer
Filmetrics F20-EXR Thin Film Analyzer
QuadTech Hybrid 2000: AC/DC/IR/DCR Analyzer
Solyndra Lot: Residual Gas Analyzer to include Shimadzu turbo pump and assorted electrical components and panel w/ A-B modules and A-B VersaView 1500P control panel

CHILLERS

Neslab DI Max (Qty. 2): DEI water to water chiller, Floor mounted
Polycold: PCC Chiller
SMC HRG 075-A: Thermo Cooler, Chiller
Spectra Physics (Laird) MRC300DH2-DV: Liquid Chiller
VWR 1173PD: Recirculator Chiller
VWR 1173PD: Chiller
VWR 3370: Air Cooled Recirculated Chiller, Unused

CONTROLLERS

Inficon XTC: Deposition Controller
Newport XPS: Motion Controller
Sigma EIES-IV: Guardian Controller
ThorLabs 205 B: Laser Diode Controller, 500mA

DICING SAWS

Buehler 11-1280-180 (Qty. 2): Dicing/Sectioning Saw



ENVIRONMENTAL CHAMBERS

ESPEC ESX-4CW: Environmental Chamber, Env. Chamber 1
ESPEC ESZ-4CA: Environmental Chamber, ENV03
ESPEC ENX60-15CW: Environmental Chamber, ENV04
Tenney TPS TJR: Environmental Chambers, stacked. -75°C - 200°C. TPS01 & 02
Tenney TPS ETCU1 10-RSW5 (Qty. 2): Environmental Chamber - Thermal Product Solutions, ENV07
Tenney TPS ETCU1 32-RCW15: Environmental Chamber - Thermal Product Solutions, ENV08
Trio Tech HAST-1000R: Environmental Chamber, ASC #1
Votsch Atlas SC1000 MHG: Solar Simulator, SSC Chamber #1, Mfg 2006

FIBERSWITCHES

Piezosystem Jena: Fiberswitch MM 1 x 8 Fiberswitch, 100-240V, 100mA in original packaging

SALE#2: Featuring All Surplus and Non-Core to Production Assets & Inventory of Solyndra: A World Renown Solar Panel Manufacturer



Air Science USA Flow Hoods



FEI Quanta 450 FEG Scanning Electron Microscope



Muratec SX-1000-C Lot to include (4) AGV's Premex



CAB FL10PCI Lot: Laser Label Printer



Orihiro ONP-2030AS2, Qty. 10



Fanuc LR Mate 200iC 5L Robot (Qty. 4)



Kuka KR-100/180-2 PA Kuka Roboters



Kuka KR 30-3 Roboters



Kuka KR-16 Roboter with Controllers



Tenney TPS ETCU110-RSWS Environmental Chamber



CAB Label Maker LM2



Bishamon LX100NBI/ AB-1634/ X30S Lift Tables Lot



Glass Inspection Tool (Qty. 2)

SALE#2: Featuring All Surplus and Non-Core to Production Assets & Inventory of Solyndra: A World Renown Solar Panel Manufacturer



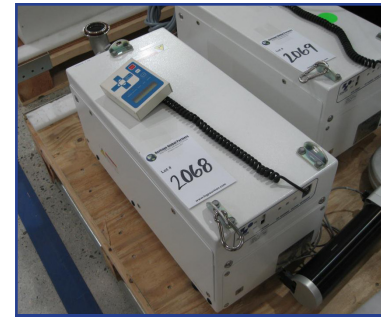
RDO 5-135/400-3 HFI Unit



Inficon 550-300 Modul 1000 Helium Leak Detector



Edwards x10i Scroll Pump



Toyota VP0100L00 505-A Dry Pump



Edwards STP-A1303C Pump

Over 1,000 late model Dell, IBM, Fujitsu, and other brand name Personal Computers, Laptops, Monitors, and Docking Stations



COMPUTERS

Dell Precision T5400 Lot: To include (4) PC's
Dell Optiplex 760/ 755 Lot: To include (3) (No Suggestions) 760's with either Intel core quad or core 2 duo processors and (14) Optiplex 755 with Intel core 2 duo processors

LAPTOPS

Dell Precision M90 (Qty. 20+): Laptop Computer, 2GHz-2.33GHz CPU, 2GB-4GB RAM, No HD
Dell Precision M6300 (Qty. 40+): Laptop Computer, Duo Core 2.8Ghz, 3GB-4GB RAM, No HD
Dell Precision M6400 (Qty. 20+): Laptop Computer, Intel® Pentium® III Xeon processor, 8 GB RAM, No HD
Dell Precision M6500 (Qty. 20+): Laptop Computer, Intel® Core™ i7 CPU Q 820 @ 1.73GHz, 12GB RAM, No HD
Dell Latitude E4300 (Qty. 4): Laptop Computer, Intel® Core™2 Duo CPU P9400 @ 2.40GHz CPU, 4 GB RAM, No HD
Dell Latitude E6400 (Qty. 50+): Laptop Computer, Intel® Core™2 Duo CPU P9700 @ 2.80GHz, 3 GB RAM, No HD
Dell Latitude E6410 (Qty. 50+): Laptop Computer, Intel® Core™ i7 CPU M 620 @ 2.67GHz, 3GB RAM, No HD
Dell Latitude D520: Laptop Computer
Dell Latitude D 620 (Qty. 20+): Laptop Computer, 2Ghz CPU, 2 GB RAM, No HD
Dell Latitude D630 (Qty. 50+): Laptop Computer, Duo Core 2Ghz, 1GB-3GB RAM, No HD
Dell Latitude D820: Laptop Computer, No HD
Toshiba (Qty. 2): Laptop Computer

MONITORS

Dell E207WFPc (Qty. 10+): 20" Flat Panel Monitor
Dell E2210Hc (Qty. 10+): 21" Flat Panel Monitor
Dell E228WFPc (Qty. 100+): 22" Flat Panel Monitor
Dell E228WFPT (Qty. 10+): 22" Flat Panel Monitor
Dell (Qty. 10+): 24" Flat Panel Monitor
Dell 2209WA (Qty. 10+): Dell Flat Panel Monitor In Box
Dell P2210H (Qty. 6): Dell Flat Panel Monitor In Box
Viewsonic: 20" Flat Panel Monitor
Viewsonic VA2223WM (Qty. 10+): 21" Flat Panel Monitor

PRINTERS

Brother MFC-7420: Fax/ Scanner/Copier/ Printer
Brother MFC7840W: Wireless Fax/ Scanner/Copier/ Printer
Canon MP830: Copier/ Fax/ Scanner
Epson Cx4200: Stylus, Printer, Copier, Scanner
Hewlett Packard Q3950A: HP Color Laser Jet 2840
Hewlett Packard C7770B: HP-J500-Ploter-CC-99
Hewlett Packard 500 (Qty. 4): Plotter, DesignJet 500
Hewlett Packard 510 (Qty. 4): Plotter, DesignJet 510
HP / Epson HP Officejet 5610 / Epson Stylus NX515 Lot: (2) printers consisting of (1) HP Office Jet All-in-One Printer and (1) Epson Stylus Wi-Fi All-in-One
Kodak 5300: EasyShare, All-in-One Printer
Konica Minolta Bizhub: Office copier, printer, scanner, fax machine
LEXMARK 4435-W22: All in one Wi-Fi Office Printer

LABEL PRINTERS

Brady IDXpert: Hand Held Labeler
CAB FL10PCI Lot: Laser Label Printer includes never used laser. Also includes workbench
Dymo Lot: to include assorted label writer to include (2) Dymo Label writer 400's and (2) twin turbo's, ect
ID Xpert: Handheld Labeler, Vinyl Self-La, XSL-21-427, Lot to include (2)
Zebra ZM400 Lot: To include (8) Label Writers

PROJECTORS

Epson EX30 LCD Projector
Mitsubishi FD630U-G (Qty. 10): Digital Projector
Mitsubishi XL550U (Qty. 9): LCD Projector
Panasonic DT-D4000 XGA 4000:
Panasonic PT-LB60NTV LB60: Wireless Digital Projector



NETWORK EQUIPMENT

Dell PowerEdge 1950 (Qty. 50+): Rackmount Server complete with: (4) 146 GB 10K rpm HDD. (1/10). US01-AMMS-TSTAP
Dell PowerEdge 2950 (Qty. 50+): Rackmount Server complete with: (8) 146 GB 10K rpm HDD. (2/4). US01-VM-IT2
Dell PowerEdge 6850 (Qty. 3): Rackmount Server complete with: (5) 300 GB 15K rpm HDD. US01-VM-DEV2. (2/3). US01-VM- DEV2
Dell / Cisco / Shoretel I.T. Equipment Lot: includes I.T. Server Rack Complete with (1) Dell PowerEdge 1950 Rack mount Server; (1) Dell PowerEdge R710 Rack mount Server; (1) Cisco 2800 Series; (1) ShoreTel Shore Gear 40/8; (1) Cisco 3560 Catalyst; (1) Dell Monitor. Lot: Assorted network switches, 6 inkjet printers, 1 label printer, UPS/ battery back up's and power distribution units, carts not included
Moxa Nport 5610 (Qty. 10+): 16 port RS-232 Device Servers
Xyratex (Qty. 6): Power distribution units
TELECOMMUNICATION
POLYCOM (3) Full Duplex Conference Phone ShoreTel IP 230 (25+) Office Telephone
Shoretel 230 and 560 Lot: To include (300+) Telephones